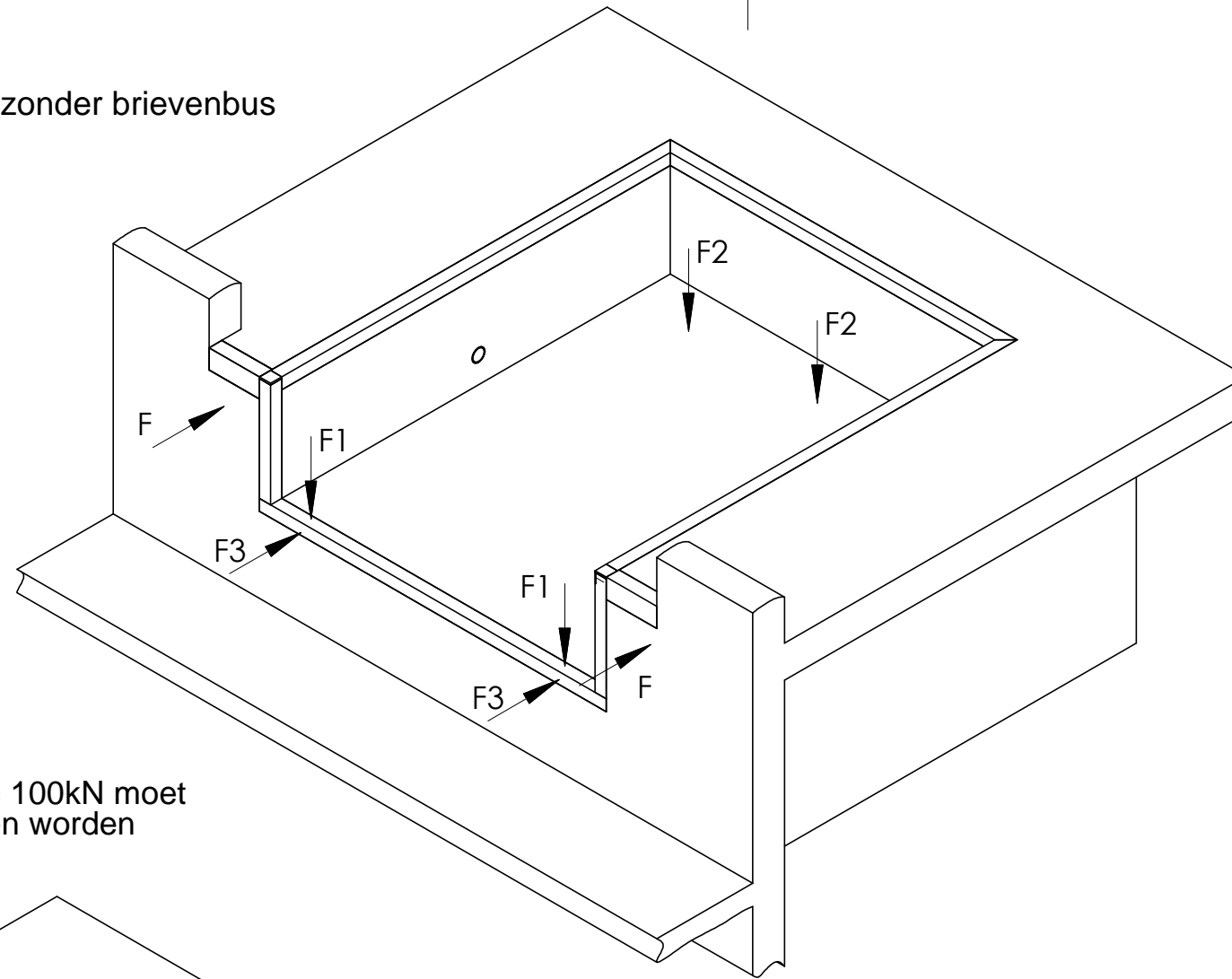


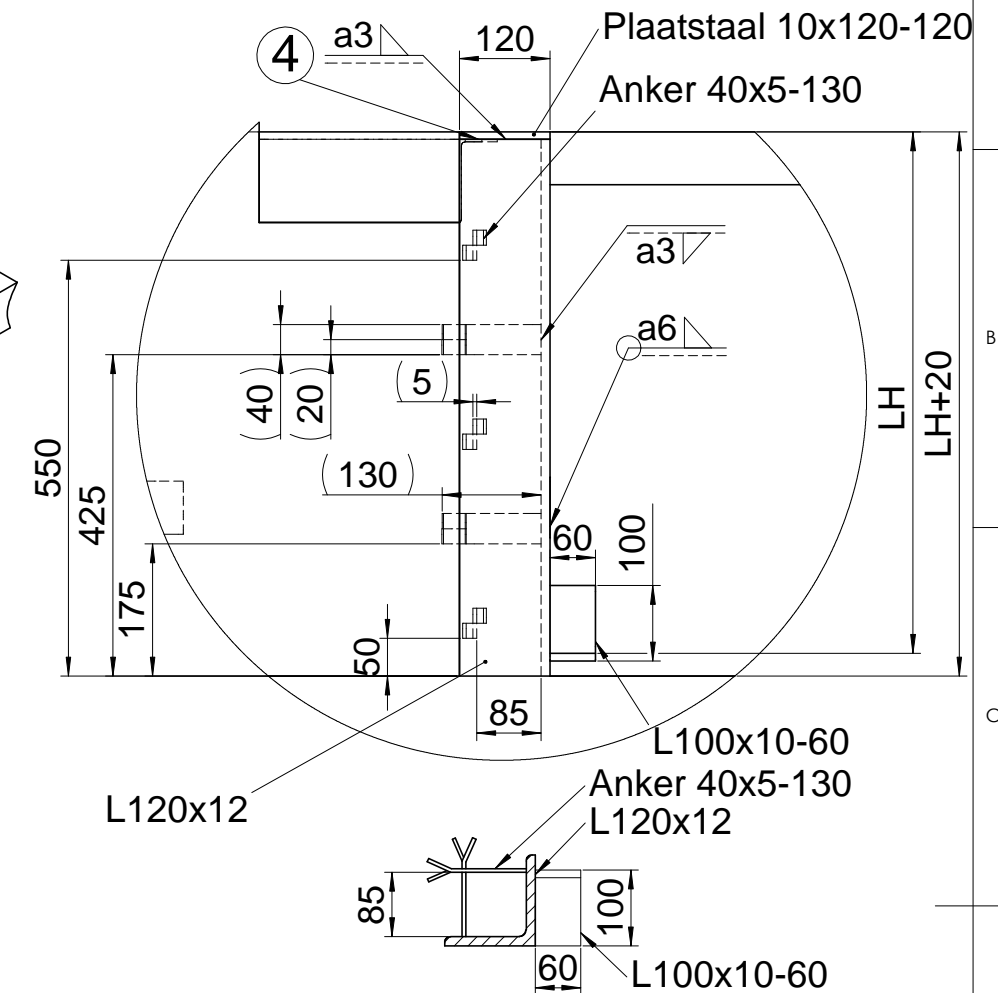
Inbouwsituatie zonder brievenbus



De horizontale stootbelasting $F = 100\text{kN}$ moet
 bouwkundig opkundig opgenomen worden

Kracht $F1 = 57\text{ kN}$
 Kracht $F2 = 42\text{ kN}$
 Kracht $F3 = 10\text{ kN}$

V (1 : 10)
 Ondersteunende details



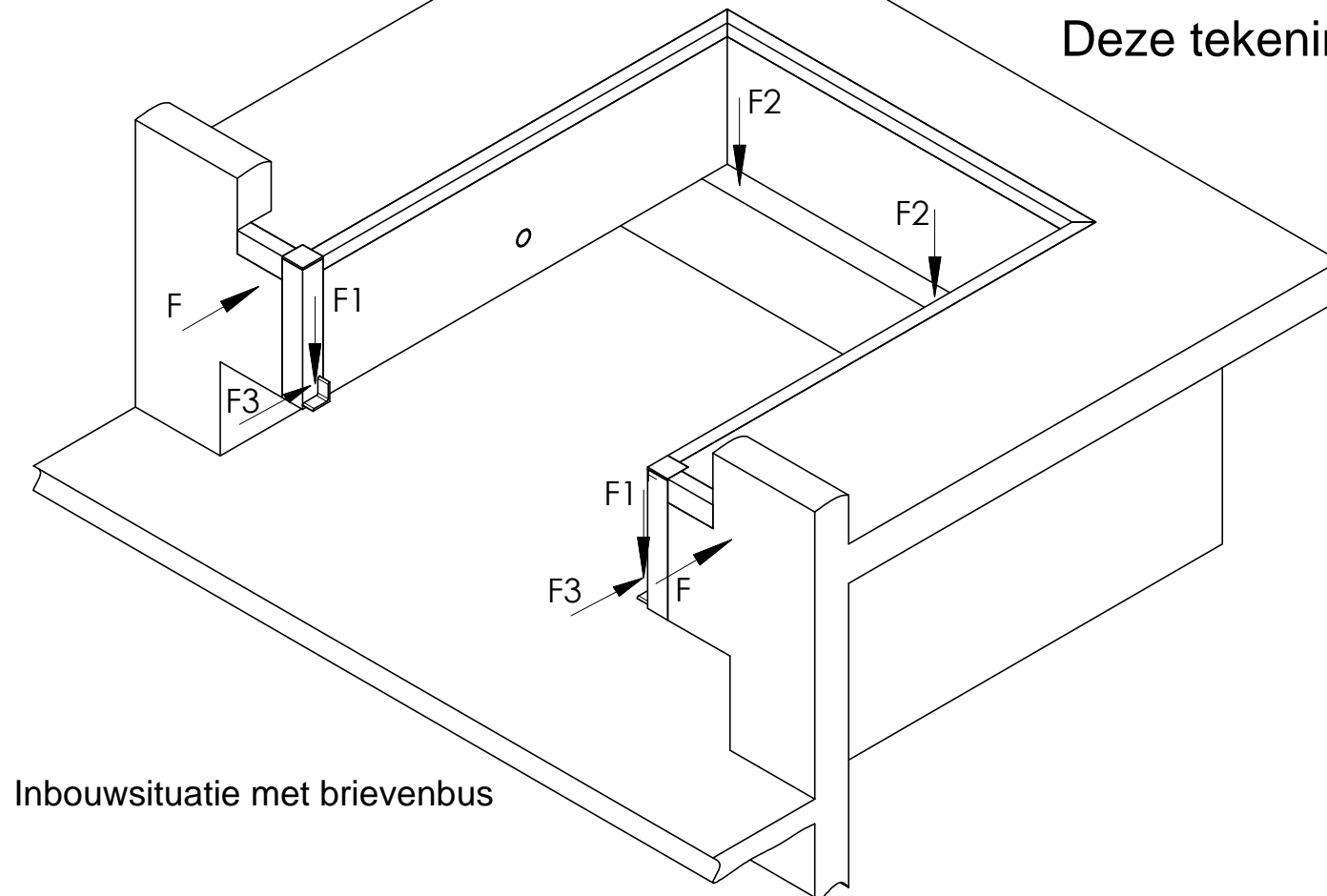
Deze tekening bestaat uit 3 pagina's

Bouwkundige voorzieningen:

1. Loze leiding t.b.v. (Binnendiameter min. 70mm, bochten <math>< 45^\circ</math>)
2. Ankerstrips puthoekstalen (Advies L70x7)
3. Staalprofiel bijv. hoek 120x80x10
4. Metalen

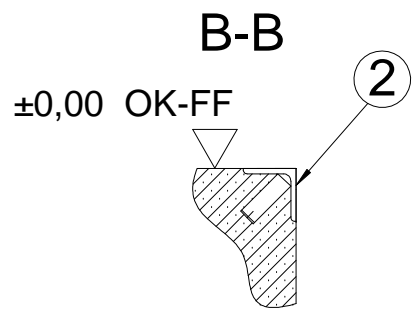
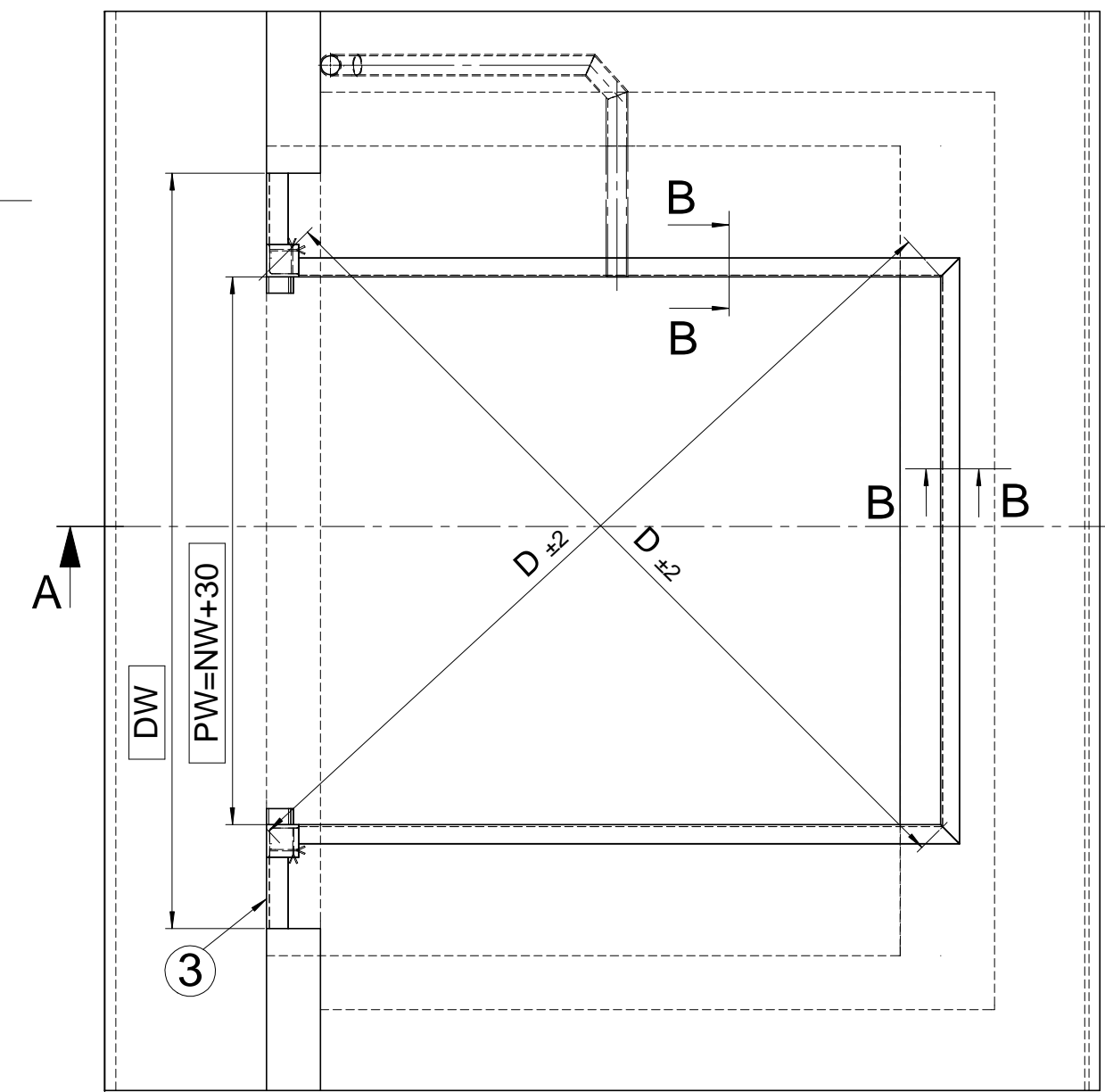
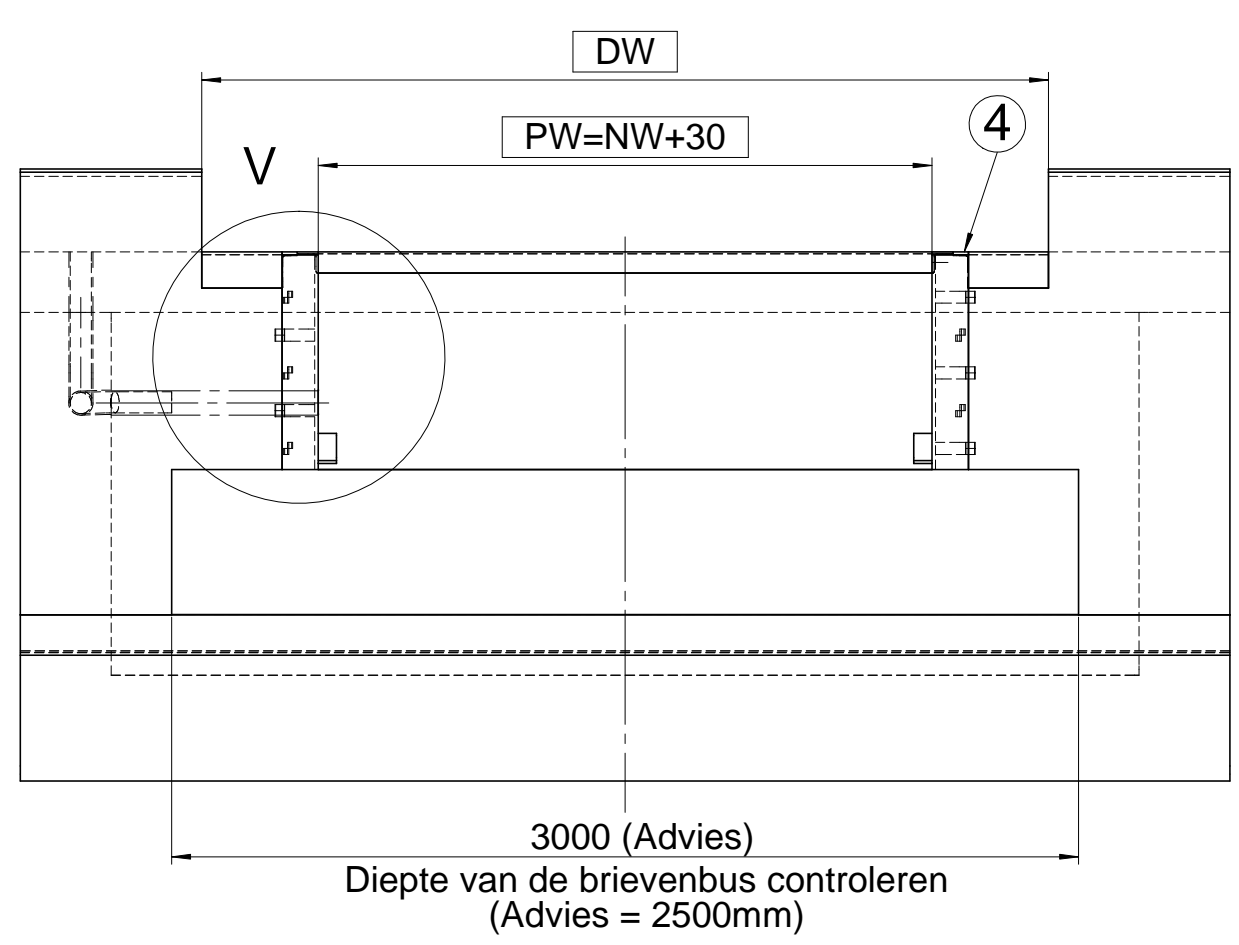
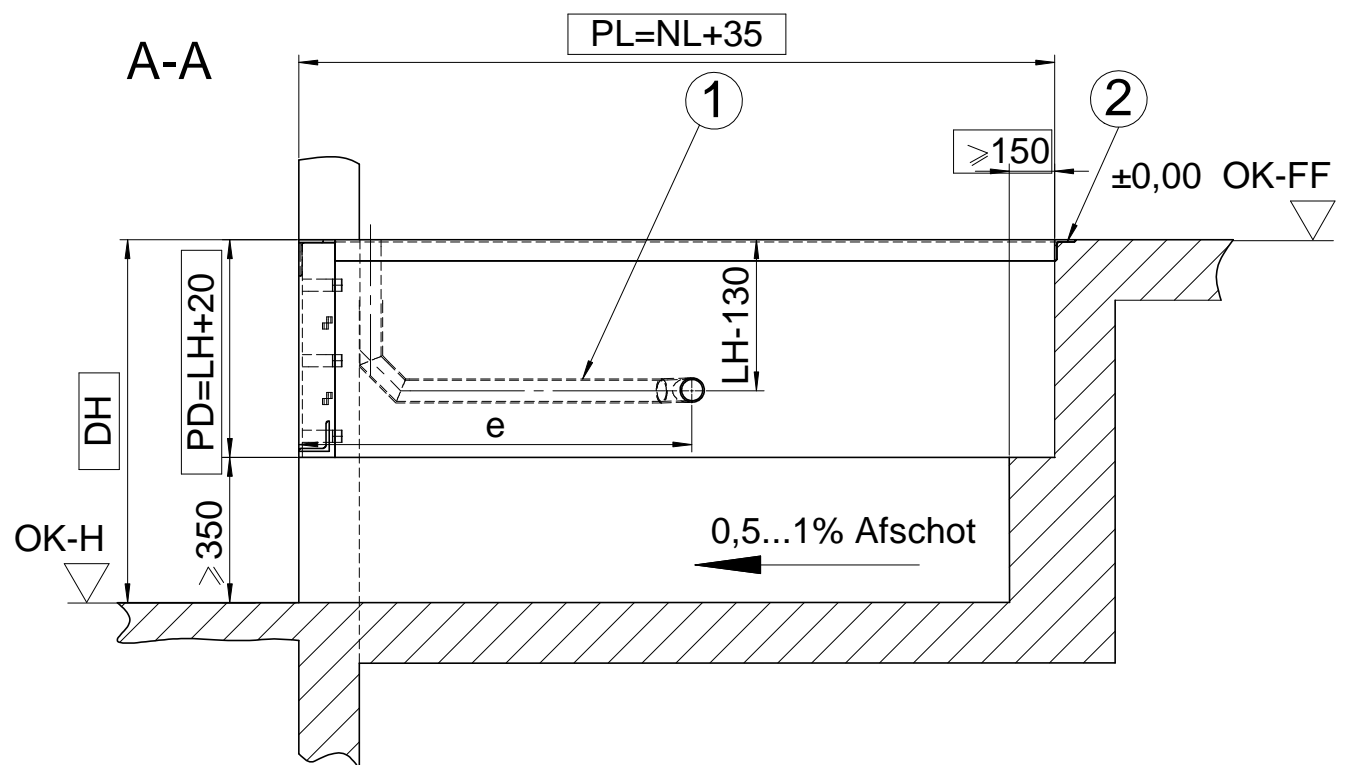
Let op!

- De maatvoering dient nauwkeurig aangehouden te worden
- De put voor de dockleveller dient exact haaks de zijn
- De hoeken scherp en haaks uitvoeren
- De diagonalen moeten even lang te zijn
- De put dient volledig bouwkundig voorzien te worden



Inbouwsituatie met brievenbus

| | | | | | | |
|--|-------------|--------------------------------|-----------------------------|-------|--|-----------------|
| It is forbidden by law to copy, duplicate this document, to transmit it to any third party or to misuse it in any way. The drawing remains our property and is to be returned immediately after use. | | General Tolerance: ISO 2768-mK | Debur and break sharp edges | | Scale: 1:25 | Revision: 01 |
| Drawn | B. Octavian | 04.06.2014 | | | Semifinished product: | |
| Checked | | | | | Title: | |
| Quality-A. | | | | | Puttekening "Methode FZ" t.b.v. L320 | |
| | | | Last Saved: | TaviB | 19.09.2014 15:08:26 | Drawing Number: |
| | | | | | 040-NF-PIT-134105-NL | |
| | | | | | Docking Solution und Service GmbH Springrad 4, D-30419 Hannover | |
| | | | | | | Sheet 1 of 3 |



| NW | PW |
|------|------|
| 2000 | 2030 |
| 2100 | 2130 |
| 2200 | 2230 |
| 2250 | 2280 |

| | |
|-------|------------------------------------|
| LH | Bouwhoogte |
| NL | Deklengte |
| PW | Inbouwbreedte |
| PL | Inbouw lengte |
| PD | Inbouwdiepte |
| OK-H | Bovenkant bestrating |
| OK-FF | Bovenkant afgewerkte bedrijfsvloer |
| DW | Deurbreedte |
| DH | Kadehoogte |

Deze tekening bestaat uit 3 pagina's

| | | | | |
|----|------|------|------|------|
| NL | 2000 | 2500 | 2750 | 3000 |
| LH | 600 | 600 | 600 | 600 |
| PD | 620 | 620 | 620 | 620 |
| PL | 2035 | 2535 | 2785 | 3035 |
| e | 1510 | 1710 | 2050 | 2180 |

It is forbidden by law to copy, duplicate this document, to transmit it to any third party or to misuse it in any way. The drawing remains our property and is to be returned immediately after use.

General Tolerance: ISO 2768-mK

Debur and break sharp edges

Scale: 1:25

Revision: 01

Semifinished product:

Title: **Puttekening "Methode FZ"**
t.b.v. L320

Drawing Number: **040-NF-PIT-134105-NL**

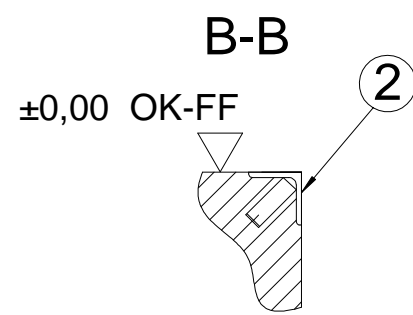
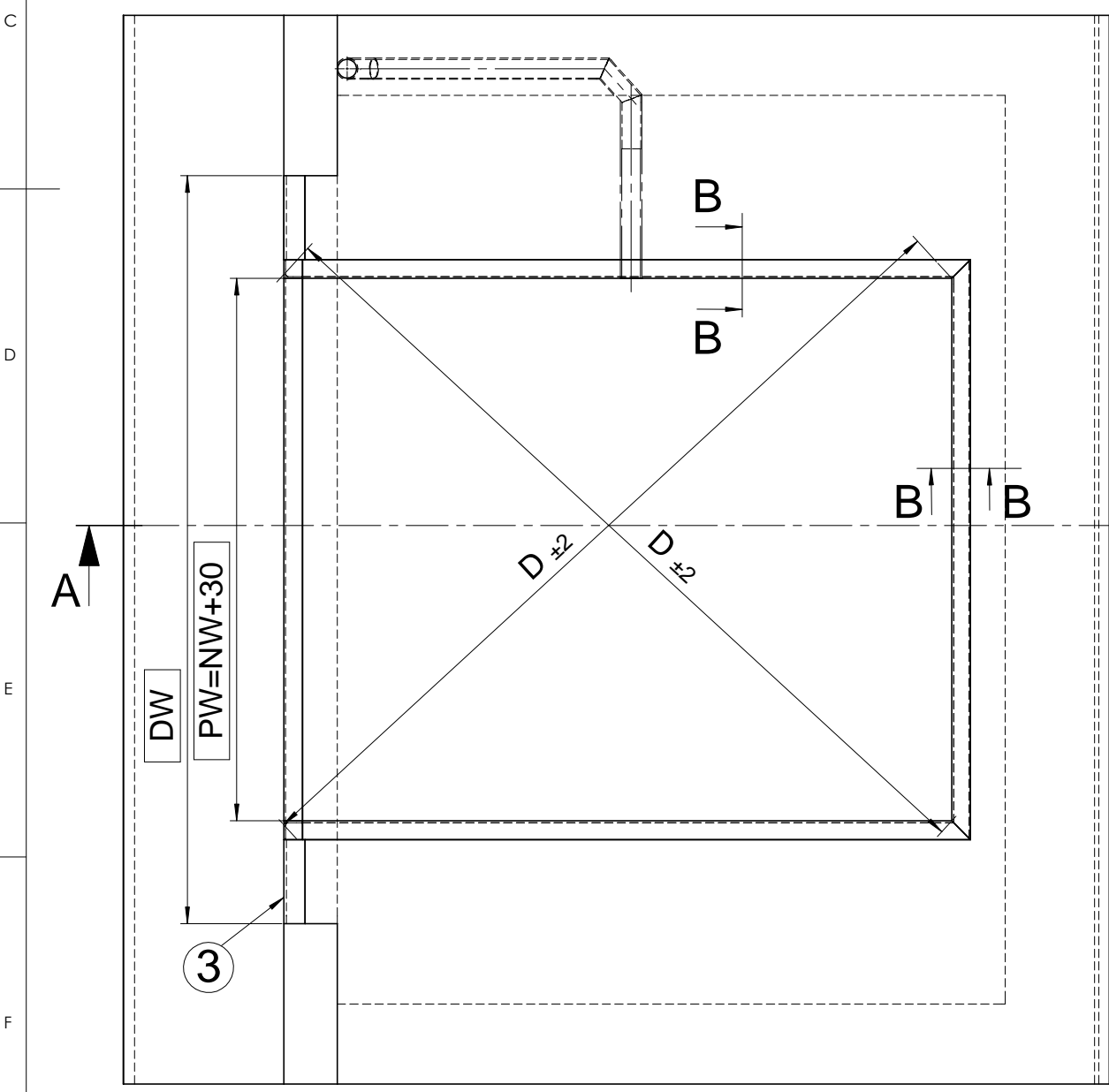
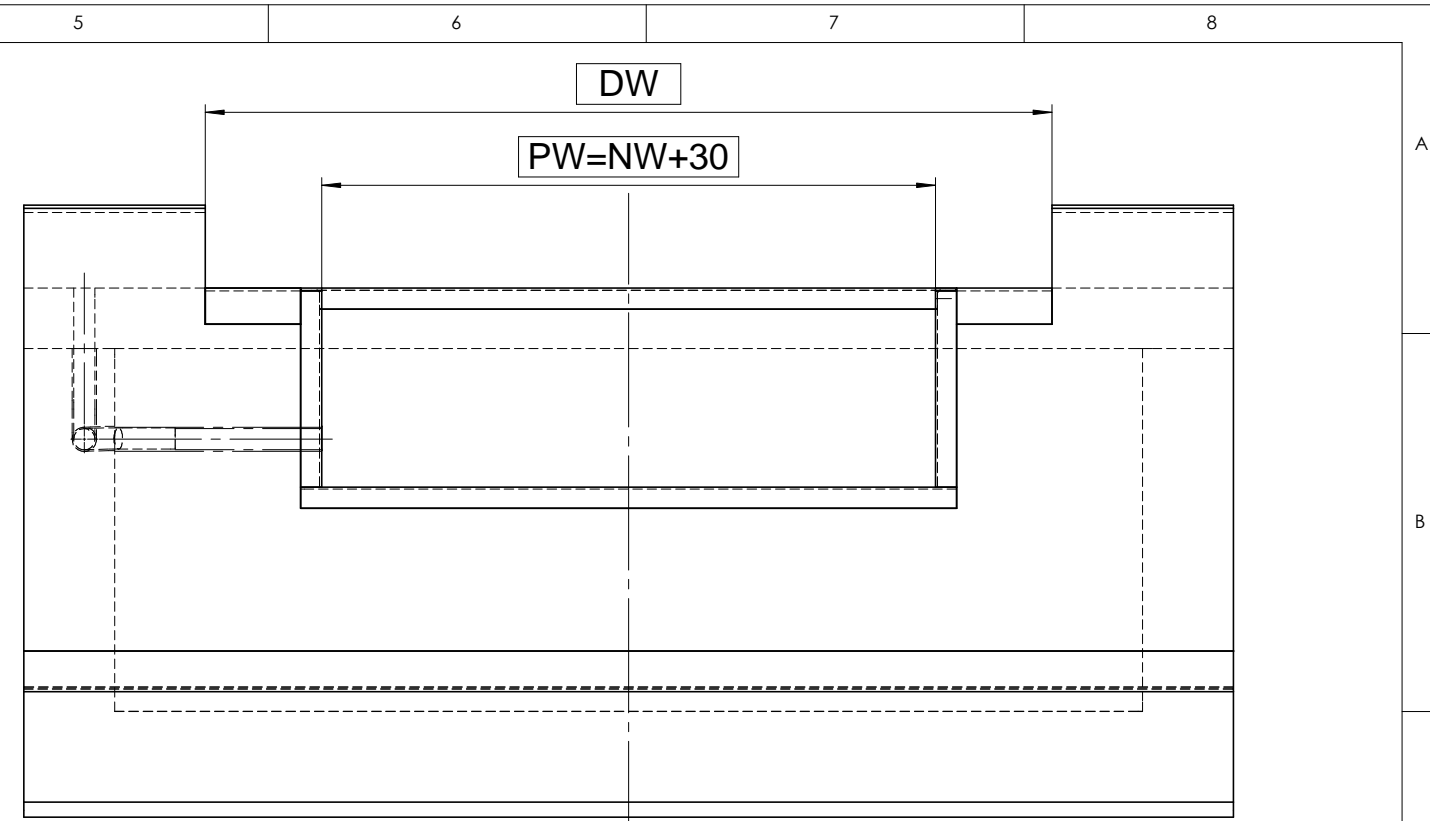
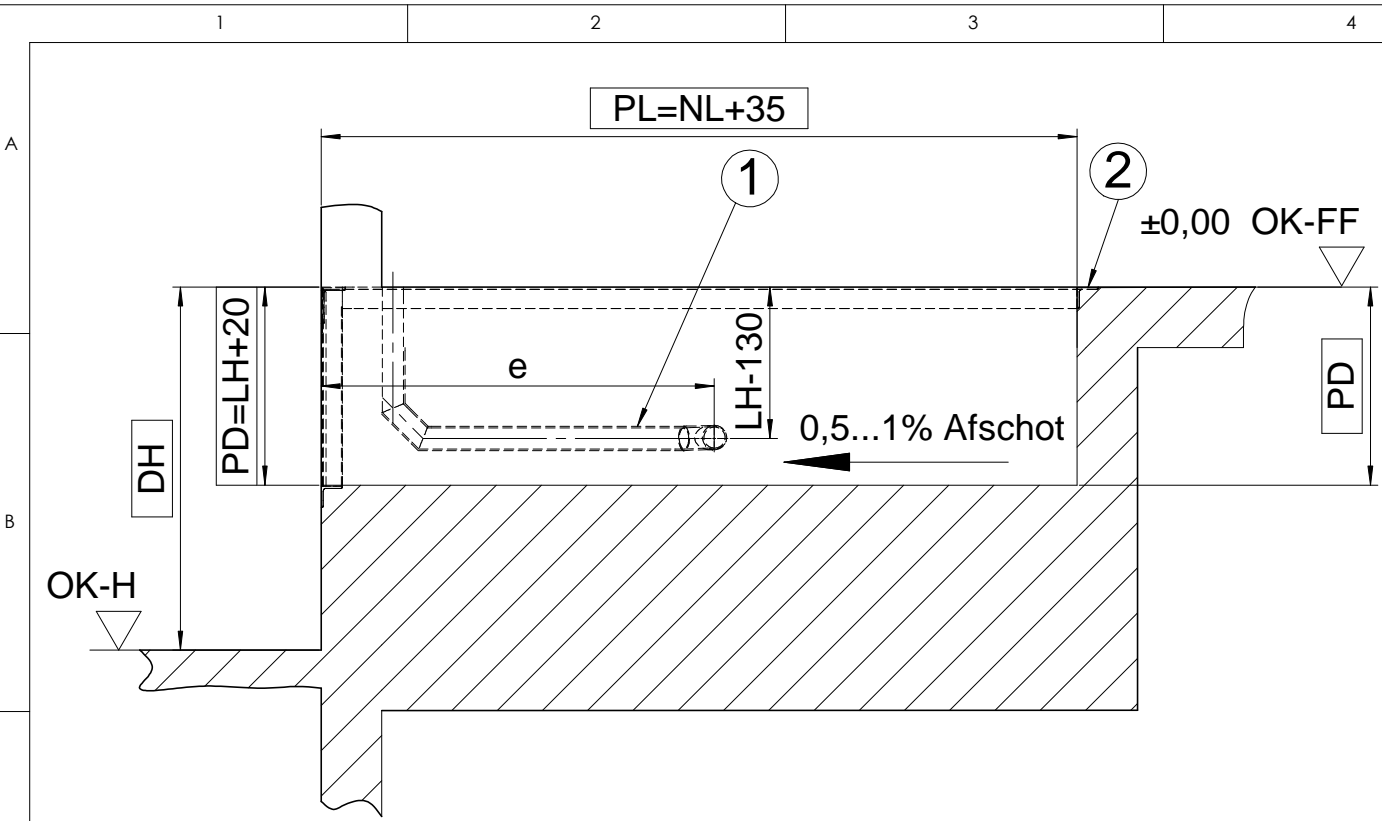
Sheet 2 of 3

Material:

Last Saved: TaviB 19.09.2014 15:08:26

novoferm
Docking Solution und Service GmbH
Springrad 4, D-30419 Hannover

| Name | Date |
|--------------------|------------|
| Drawn: B. Octavian | 04.06.2014 |
| Checked: | |
| Quality-A: | |



| NW | PW |
|------|------|
| 2000 | 2030 |
| 2100 | 2130 |
| 2200 | 2230 |
| 2250 | 2280 |

| | |
|-------|-------------------------------------|
| LH | Bouwhoogte |
| NL | Deklengte |
| PW | Inbouwbreedte |
| PL | Inbouw lengte |
| PD | Inbouwdiepte |
| OK-H | Bovenkant bestrating |
| OK-FF | Bovenkant afgewerkte bedrijfspvloer |
| DW | Deurbreedte |
| DH | Kadehoogte |

Deze tekening bestaat uit 3 pagina's

| | | | | |
|----|------|------|------|------|
| NL | 2000 | 2500 | 2750 | 3000 |
| LH | 600 | 600 | 600 | 600 |
| PD | 620 | 620 | 620 | 620 |
| PL | 2035 | 2535 | 2785 | 3035 |
| e | 1510 | 1710 | 2050 | 2180 |

It is forbidden by law to copy, duplicate this document, to transmit it to any third party or to misuse it in any way. The drawing remains our property and is to be returned immediately after use.

General Tolerance: ISO 2768-mK

Debur and break sharp edges

Scale: 1:25

Revision: 01

Semifinished product:

Title: Puttekening "Methode FZ" t.b.v. L320

Drawn: B. Octavian, Date: 04.06.2014

Checked:

Quality-A:

Last Saved: TaviB, 19.09.2014 15:08:26

Drawing Number: 040-NF-PIT-134105-NL

Material:

novoferm
Docking Solution und Service GmbH
Springrad 4, D-30419 Hannover

A3
Sheet 3 of 3